

**Shaping Our Future**

Holmes County/Village of Millersburg Comprehensive Plan



LAND USE WORKSHOP

# Hey Holmes County! Let's Talk About Transportation





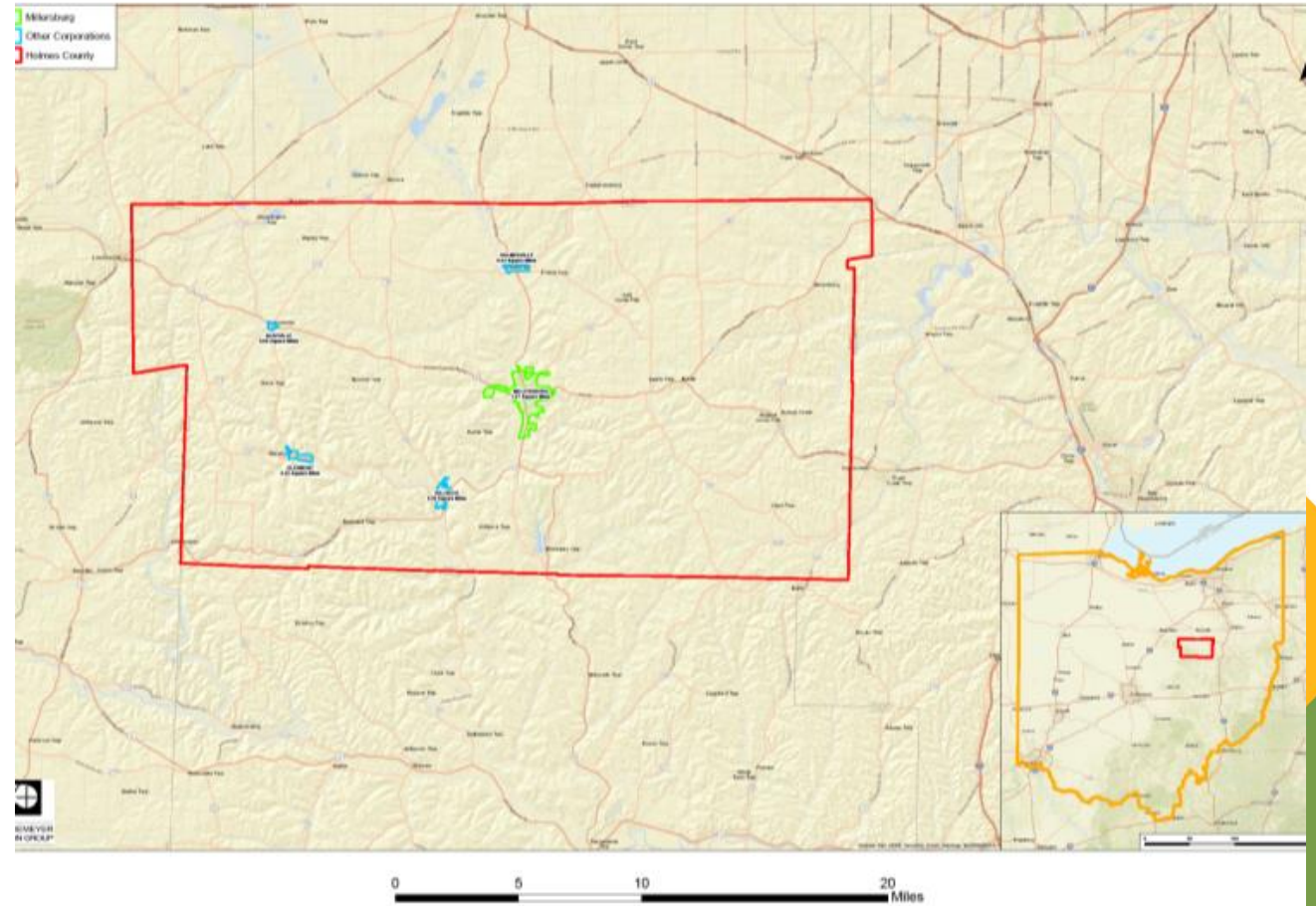
## Project Scope:

Create a comprehensive plan for the future that addresses existing conditions and future opportunities/challenges to be a road map for the County and Village.

## Services Provided:

- Discovery/Data Collection
- Collaborative/Visioning
- Plan Development Workshops/ Public Input
- Draft Plan Prep
- Public Review
- Final Adoption

Holmes County and Village of Millersburg Comprehensive Plan | Location Map





## STEERING COMMITTEE MEMBERS

Arnie Oliver, HC Planning Director

Nate Troyer, Millersburg Village Manager

Mark Leininger, HC Economic Development Council, Inc.

Scott Rodhe, HC Planning Commission

Jr. Miller, Kaufman Realty

Tiffany Gerber, HC Chamber of Commerce Director

Erik Beun, East Holmes Schools Superintendent

Brett Gallion, HC Chamber of Commerce President

Jerry Schlabach, HC Planning Commission

Gabe Aufrance, HC Planning Commission

Brian Rafferty, Fire District 1

Linda Campbell, Nashville/Killbuck

Dan Schlabach, HC Planning Commission

Chris Young, HC Engineer

Joe Miller, HC Commissioner







## SUB-COMMITTEES

- Transportation
- Land Use
- Environment & Natural Resources
- Economic Development
- Education
- Parks & Recreation
- Infrastructure & Utilities
- Village/Unincorporated Communities
- Public Safety
- Amish Community
- Agriculture
- Housing
- Arts & Culture





## WHAT IS A COMPREHENSIVE PLAN?

- A process that determines community goals and aspirations in terms of community development
- A plan that dictates public policy in terms of key issues in the community
  - Land Use/ Zoning
  - Economic Development (Including Education, Workforce Development)
  - Housing
  - Transportation (All Modes)
  - Agricultural, Natural, Cultural Resources
  - Infrastructure/Utilities/Public Services
  - Tourism
  - Downtown Revitalization/Historic Preservation





## PUBLIC INPUT WORKSHOPS

1. Land Use Development
2. Economic Development
3. Housing
4. **Transportation**
5. Historic Preservation/Downtown
6. Infrastructure/Capital Improvements/Utilities/Public Safety
7. Agricultural/Natural & Cultural Resources
8. Tourism





## EXISTING CONDITIONS



- **423 square miles of land**
- 14 townships, 7 incorporated municipalities, 8 unincorporated municipalities
- **44,000 residents**
- Predominant land uses: forests (40%); pasture/hay (39%); cropland (13%); low density development (6%)
- 1,673 farms in county with average size of 164 acres
- **Gets an average of 2 million tourists on a yearly basis** (a boon and a challenge)



What do we have to recognize when planning?

- Topography
- Historic downtown
- Two lane roads
- Tourism traffic
- Buggy, Bike, E-Bike traffic
- Truck traffic







- 3.62% population increase 2010-17, compared to 1.06% in Ohio
  - Growth occurring primarily in central & southcentral parts of County (Killbuck Twp, Killbuck Vlg, Hardy & Monroe Townships)
  - NE County (Paint & Salt Creek Townships)
- Mean travel time to work
  - 16.7 minutes Millersburg
  - 20.9 minutes County
  - 23.4 minutes Ohio and 24.6 minutes US
- Taking car, truck or van to work?
  - 94.4% of Millersburg residents
  - 74.6% of County residents
  - 91.1% Ohio, 85.6% US





- Walking to Work?
  - Millersburg 2.2% walking, 6.4% of occupied housing units have no vehicles
  - County 6.3% walking, 29.5% of occupied housing units have no vehicles
- Working from Home?
  - 1.9% in Millersburg and 7.9% in County
- No interstate highways
  - Western edge of County (along 39) is 18 miles to I-71
  - Eastern edge of County (along SR 250) is 9 miles to I-77
  - 8 miles south of US 30





### **Regional Safety Plan & County Local Road Safety Plan**

- Primary goal is reduction of fatalities and serious injuries
- Address vision and objective of safer county by reducing fatalities and serious injuries resulting from crashes by 2% per year
- High risk segments were mapped
- Emphasis areas
  - Roadway departures
  - Younger driver
  - Unrestrained occupants
  - Older drive
  - Pedestrian
  - Motorcycle
  - Amish buggy
  - Bicycle





### **Tri-County Active Transportation Plan**

#### *Millersburg*

- Connections to Holmes Co Trail at Old Airport Park
- Projects outlined in West Holmes School Travel Plan

#### *Rural Areas*

- Buggy lanes SR514 (3 mi N of Nashville), SR241 (Millersburg to Wayne Co line)
- Mohican Greenway Corridor
  - Advanced warning signs for buggies
  - E-Bike safety issues
  - Projects outlined in East Holmes School Travel Plan
- Amish Student Safety
  - Intersection of TR 356 & SR 557- sight line issues
  - CR 160 (CR 77 to Winesburg)- buggy lane needed
  - US 62/SR 39 & SR 557 and US 62/ SR 39 & CR 201- both intersections







- Focus on safety, traffic, barriers, gaps
- Look at transportation improvements that will support the economy and improve the quality of life
- Develop and strengthen transportation networks
  - Vehicle
  - Transit
  - Bicycle
  - Pedestrian





### Public Transportation in Rural Areas

- Sparsely Populated Areas: translates to fewer customers, longer routes
- Long Distance Trips: Customer widely spread out
- Limited Funding: tight budgets, less funding
- Aging in Place: on-call & appointment-based transportation increase
- Dependent Population: taxis, trains, uber aren't available



## VISIONING THEMES TRANSPORTATION

- Eliminate transportation as barrier for families and workers
- Create ride sharing/public transportation options, shuttles for visitors
- Develop infrastructure to reduce traffic congestion, improve county/township roads to alleviate traffic on main roads, control traffic congestion at city centers
- Limit number of private drives that share a single residence, increase use of shared drives
- Continue to encourage and facilitate non-motorized transportation
- Continue connecting places with safe corridors for pedestrians and other means of non-motorized transportation



- Provide increased education on safety for bikes, e-bikes, and horse-drawn buggies to both tourists and operators
- Introduction of 4-lane roads for most heavily traveled access points
- Cross-country bike trails to route bike traffic off roads
- Dedicated routes for heavy commercial traffic
- Create new sidewalks and repair existing sidewalks







- Improve Google maps for safety purposes and traffic wayfinding accuracy
- Better signage and/or use of road names instead of numbers for safety purposes and wayfinding accuracy





### ***Economic Development***

- Is traffic, lack of bypass discouraging economic development?
- Access to jobs and housing depends on robust transportation network





### ***Land Use***

- Curb cuts, driveways





### *Tourism*

- Are tourists frustrated, intimidated with traffic volume?
  - Aging tourist drivers
- Is truck traffic changing the scenic areas/views?







## *Challenges*

- Topography
- Traffic congestion
- Traffic noise
- Road sharing
- Lack of divided highways/interstate access
- Curb cuts





### *Opportunities*

- Road tax (sales tax)
  - Current improvements and future improvements
- ODOT Safety Funds
- Educational safety program
- Marketing of easy inflow commute





## LAND USE- TRANSPORTATION

- Where are there conflicts with land use between transportation and other uses?
- What would improve your quality of life related to transportation and land use?
  - Reduced accidents, injuries, fatalities
  - Reduced commute times
  - Reduced safety services response time
  - Alternative forms of transportation
  - Reduced traffic, congestion, noise
- Where should changes be made to existing land use related to transportation?





- Bypass around Millersburg
- Widening and shared use path on roads
- Employee ride sharing
- Non-motorized and motorized drivers' education for Amish and English
- Support systems that allow people to live and work in the county
- Examine additional strategies to alleviate congestion
- Bike trails to capitalize on existing system & encourage bicycle tourism
- Shuttle (trolley or bus)



- ## Hey Holmes County, What's Your Vision?
- Give us your ideas for a Vision Statement
  - Complete notecards on your way out
  - Or email to [lfalcone@kleinfelder.com](mailto:lfalcone@kleinfelder.com)

**Hey Holmes County! What's Your Vision?**

---

---

---

---

---

---

---

---

---

---





[lfalcone@kleinfelder.com](mailto:lfalcone@kleinfelder.com)

[ptecpanecat1@kleinfelder.com](mailto:ptecpanecat1@kleinfelder.com)

- **Upcoming Dates**

- **Workshop #5 Downtown/ Historic Preservation Workshop**
  - Wednesday, October 12<sup>th</sup> 5:30- 7pm

- **Workshop #6 Infrastructure/Utilities/Public Safety Workshop**
  - Thursday, October 28<sup>th</sup> 5:30-7 pm
  - Holmes County Fairgrounds

QUESTIONS